

REVISED: 12/09/23

TUBE FLANGE (TO SUIT IMPERIAL TUBE) - TABLE E - AS2129\* - FFSO

| TMC CODE  | SIZE   |        | ØID   | ØOD | BOLT PATTERN |          |        | THICKNESS | A | B | C | D | E     | GRADE  | MARKINGS |
|-----------|--------|--------|-------|-----|--------------|----------|--------|-----------|---|---|---|---|-------|--|----------|
|           | METRIC | INCH   |       |     | ØPCD         | BOLT NO. | BOLT Ø |           |   |   |   |   |       |  |          |
| ** STF25E | 25.4   | 1"     | 27    | 115 | 83           | 4        | 14     | 10        | - | - | - | - | F316L | TMC 25.4 TUBE T/E NON STANDARD ASTM A182 F316L PO# HEAT# |          |
| ** STF30E | 31.8   | 1 1/4" | 33.4  | 120 | 87           | 4        | 14     | 10        | - | - | - | - | F316L | TMC 31.8 TUBE T/E NON STANDARD ASTM A182 F316L PO# HEAT# |          |
| ** STF40E | 38.1   | 1 1/2" | 39.7  | 135 | 98           | 4        | 14     | 10        | - | - | - | - | F316L | TMC 38.1 TUBE T/E NON STANDARD ASTM A182 F316L PO# HEAT# |          |
| STF50E    | 50.8   | 2"     | 52.4  | 150 | 114          | 4        | 18     | 10        | - | - | - | - | F316L | TMC 50.8 TUBE T/E AS2129 ASTM A182 F316L PO# HEAT#       |          |
| STF65E    | 63.5   | 2 1/2" | 65.1  | 165 | 127          | 4        | 18     | 10        | - | - | - | - | F316L | TMC 63.5 TUBE T/E AS2129 ASTM A182 F316L PO# HEAT#       |          |
| STF75E    | 76.2   | 3"     | 77.8  | 185 | 146          | 4        | 18     | 11        | - | - | - | - | F316L | TMC 76.2 TUBE T/E AS2129 ASTM A182 F316L PO# HEAT#       |          |
| STF100E   | 101.6  | 4"     | 103.2 | 215 | 178          | 8        | 18     | 13        | - | - | - | - | F316L | TMC 101.6 TUBE T/E AS2129 ASTM A182 F316L PO# HEAT#      |          |
| STF125E   | 127    | 5"     | 128.6 | 255 | 210          | 8        | 18     | 14        | - | - | - | - | F316L | TMC 127 TUBE T/E AS2129 ASTM A182 F316L PO# HEAT#        |          |
| STF150E   | 152.4  | 6"     | 154   | 280 | 235          | 8        | 22     | 17        | - | - | - | - | F316L | TMC 152.4 TUBE T/E AS2129 ASTM A182 F316L PO# HEAT#      |          |
| STF200E   | 203.2  | 8"     | 204.8 | 335 | 292          | 8        | 22     | 19        | - | - | - | - | F316L | TMC 203.2 TUBE T/E AS2129 ASTM A182 F316L PO# HEAT#      |          |

SPIRAL WELD FLANGE (TO SUIT ID TUBE) - TABLE E - AS2129 - FFSO

| TMC CODE | SIZE     |      | ØID   | ØOD | BOLT PATTERN |          |        | THICKNESS | A | B | C | D | E     | GRADE  | MARKINGS |
|----------|----------|------|-------|-----|--------------|----------|--------|-----------|---|---|---|---|-------|--|----------|
|          | METRIC   | INCH |       |     | ØPCD         | BOLT NO. | BOLT Ø |           |   |   |   |   |       |  |          |
| SSWF200E | 203.2 ID | 8"   | 208.8 | 335 | 292          | 8        | 22     | 19        | - | - | - | - | F316L | TMC 203.2 ID SW T/E AS2129 ASTM A182 F316L PO# HEAT# |          |
| SSWF250E | 254 ID   | 10"  | 259.6 | 405 | 356          | 12       | 22     | 22        | - | - | - | - | F316L | TMC 254 ID SW T/E AS2129 ASTM A182 F316L PO# HEAT#   |          |
| SSWF300E | 304.8 ID | 12"  | 312.4 | 455 | 406          | 12       | 26     | 25        | - | - | - | - | F316L | TMC 304.8 ID SW T/E AS2129 ASTM A182 F316L PO# HEAT# |          |

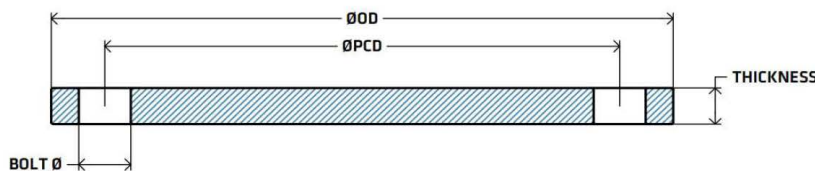
PIPE FLANGE (TO SUIT SCHEDULE PIPE) - TABLE E - AS2129\* - FFSO

| TMC CODE  | SIZE   |        | ØID   | ØOD | BOLT PATTERN |          |        | THICKNESS | A | B | C | D | E     | GRADE  | MARKINGS |
|-----------|--------|--------|-------|-----|--------------|----------|--------|-----------|---|---|---|---|-------|--|----------|
|           | METRIC | INCH   |       |     | ØPCD         | BOLT NO. | BOLT Ø |           |   |   |   |   |       |  |          |
| ** SPF15E | 15NB   | 1/2"   | 22.3  | 95  | 67           | 4        | 14     | 10        | - | - | - | - | F316L | TMC 15NB PIPE T/E NON STANDARD ASTM A182 F316L PO# HEAT# |          |
| ** SPF20E | 20NB   | 3/4"   | 27.6  | 100 | 73           | 4        | 14     | 10        | - | - | - | - | F316L | TMC 20NB PIPE T/E NON STANDARD ASTM A182 F316L PO# HEAT# |          |
| ** SPF25E | 25NB   | 1"     | 34.5  | 115 | 83           | 4        | 14     | 10        | - | - | - | - | F316L | TMC 25NB PIPE T/E NON STANDARD ASTM A182 F316L PO# HEAT# |          |
| ** SPF32E | 32NB   | 1 1/4" | 43.1  | 120 | 87           | 4        | 14     | 10        | - | - | - | - | F316L | TMC 32NB PIPE T/E NON STANDARD ASTM A182 F316L PO# HEAT# |          |
| ** SPF40E | 40NB   | 1 1/2" | 49.5  | 135 | 98           | 4        | 14     | 10        | - | - | - | - | F316L | TMC 40NB PIPE T/E NON STANDARD ASTM A182 F316L PO# HEAT# |          |
| SPF50E    | 50NB   | 2"     | 61.9  | 150 | 114          | 4        | 18     | 10        | - | - | - | - | F316L | TMC 50NB PIPE T/E AS2129 ASTM A182 F316L PO# HEAT#       |          |
| SPF65E    | 65NB   | 2 1/2" | 74.6  | 165 | 127          | 4        | 18     | 10        | - | - | - | - | F316L | TMC 65NB PIPE T/E AS2129 ASTM A182 F316L PO# HEAT#       |          |
| SPF80E    | 80NB   | 3"     | 90.6  | 185 | 146          | 4        | 18     | 11        | - | - | - | - | F316L | TMC 80NB PIPE T/E AS2129 ASTM A182 F316L PO# HEAT#       |          |
| SPF100E   | 100NB  | 4"     | 116   | 215 | 178          | 8        | 18     | 13        | - | - | - | - | F316L | TMC 100NB PIPE T/E AS2129 ASTM A182 F316L PO# HEAT#      |          |
| SPF125E   | 125NB  | 5"     | 143.7 | 255 | 210          | 8        | 18     | 14        | - | - | - | - | F316L | TMC 125NB PIPE T/E AS2129 ASTM A182 F316L PO# HEAT#      |          |
| SPF150E   | 150NB  | 6"     | 170.6 | 280 | 235          | 8        | 22     | 17        | - | - | - | - | F316L | TMC 150NB PIPE T/E AS2129 ASTM A182 F316L PO# HEAT#      |          |
| SPF200E   | 200NB  | 8"     | 221.4 | 335 | 292          | 8        | 22     | 19        | - | - | - | - | F316L | TMC 200NB PIPE T/E AS2129 ASTM A182 F316L PO# HEAT#      |          |
| SPF250E   | 250NB  | 10"    | 276.3 | 405 | 356          | 12       | 22     | 22        | - | - | - | - | F316L | TMC 250NB PIPE T/E AS2129 ASTM A182 F316L PO# HEAT#      |          |
| SPF300E   | 300NB  | 12"    | 327.1 | 455 | 406          | 12       | 26     | 25        | - | - | - | - | F316L | TMC 300NB PIPE T/E AS2129 ASTM A182 F316L PO# HEAT#      |          |
| SPF350E   | 350NB  | 14"    | 359.1 | 525 | 470          | 12       | 26     | 29        | - | - | - | - | F316L | TMC 350NB PIPE T/E AS2129 ASTM A182 F316L PO# HEAT#      |          |
| SPF400E   | 400NB  | 16"    | 410.4 | 580 | 521          | 12       | 26     | 32        | - | - | - | - | F316L | TMC 400NB PIPE T/E AS2129 ASTM A182 F316L PO# HEAT#      |          |



BSP THREADED FLANGE - TABLE E - AS2129\* - FFTH

| TMC CODE    | SIZE   |        | ØID         | ØOD | BOLT PATTERN |          |        | THICKNESS | A   | B   | C  | D | E | GRADE | MARKINGS  |
|-------------|--------|--------|-------------|-----|--------------|----------|--------|-----------|-----|-----|----|---|---|-------|---|
|             | METRIC | INCH   |             |     | ØPCD         | BOLT NO. | BOLT Ø |           |     |     |    |   |   |       |   |
| ** SBSPF15E | 15NB   | 1/2"   | 1/2" BSPP   | 95  | 67           | 4        | 14     | 10        | 33  | 38  | 10 | 2 | - | F316L | TMC 15NB BSP T/E NON STANDARD ASTM A182 F316L PO# HEAT# |
| ** SBSPF20E | 20NB   | 3/4"   | 3/4" BSPP   | 100 | 73           | 4        | 14     | 10        | 38  | 44  | 11 | 2 | - | F316L | TMC 20NB BSP T/E NON STANDARD ASTM A182 F316L PO# HEAT# |
| ** SBSPF25E | 25NB   | 1"     | 1" BSPP     | 115 | 83           | 4        | 14     | 10        | 48  | 52  | 11 | 2 | - | F316L | TMC 25NB BSP T/E NON STANDARD ASTM A182 F316L PO# HEAT# |
| ** SBSPF32E | 32NB   | 1 1/4" | 1 1/4" BSPP | 120 | 87           | 4        | 14     | 10        | 56  | 58  | 11 | 2 | - | F316L | TMC 32NB BSP T/E NON STANDARD ASTM A182 F316L PO# HEAT# |
| ** SBSPF40E | 40NB   | 1 1/2" | 1 1/2" BSPP | 135 | 98           | 4        | 14     | 10        | 62  | 70  | 13 | 2 | - | F316L | TMC 40NB BSP T/E NON STANDARD ASTM A182 F316L PO# HEAT# |
| SBSPF50E    | 50NB   | 2"     | 2" BSPP     | 150 | 114          | 4        | 18     | 10        | 75  | 79  | 13 | 2 | - | F316L | TMC 50NB BSP T/E AS2129 ASTM A182 F316L PO# HEAT#       |
| SBSPF65E    | 65NB   | 2 1/2" | 2 1/2" BSPP | 165 | 127          | 4        | 18     | 10        | 90  | 93  | 16 | 2 | - | F316L | TMC 65NB BSP T/E AS2129 ASTM A182 F316L PO# HEAT#       |
| SBSPF80E    | 80NB   | 3"     | 3" BSPP     | 185 | 146          | 4        | 18     | 11        | 106 | 112 | 16 | 2 | - | F316L | TMC 80NB BSP T/E AS2129 ASTM A182 F316L PO# HEAT#       |
| SBSPF100E   | 100NB  | 4"     | 4" BSPP     | 215 | 178          | 8        | 18     | 13        | 133 | 140 | 19 | 4 | - | F316L | TMC 100NB BSP T/E AS2129 ASTM A182 F316L PO# HEAT#      |

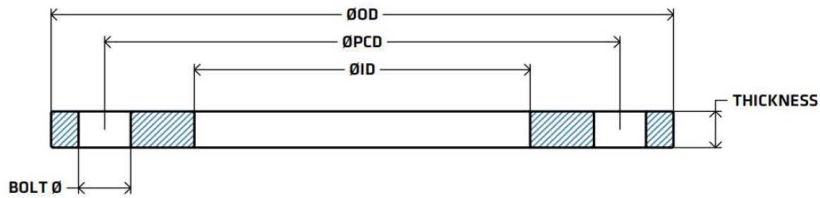


BLIND FLANGE - TABLE E - AS2129\* - FFBF

| TMC CODE  | SIZE   |        | ØID | ØOD | BOLT PATTERN |          |        | THICKNESS | A | B | C | D | E     | GRADE   | MARKINGS |
|-----------|--------|--------|-----|-----|--------------|----------|--------|-----------|---|---|---|---|-------|---|----------|
|           | METRIC | INCH   |     |     | ØPCD         | BOLT NO. | BOLT Ø |           |   |   |   |   |       |   |          |
| ** SBF15E | 15NB   | 1/2"   | N/A | 95  | 67           | 4        | 14     | 10        | - | - | - | - | F316L | TMC 15NB BLIND T/E NON STANDARD ASTM A182 F316L PO# HEAT# |          |
| ** SBF20E | 20NB   | 3/4"   | N/A | 100 | 73           | 4        | 14     | 10        | - | - | - | - | F316L | TMC 20NB BLIND T/E NON STANDARD ASTM A182 F316L PO# HEAT# |          |
| ** SBF25E | 25NB   | 1"     | N/A | 115 | 83           | 4        | 14     | 10        | - | - | - | - | F316L | TMC 25NB BLIND T/E NON STANDARD ASTM A182 F316L PO# HEAT# |          |
| ** SBF32E | 32NB   | 1 1/4" | N/A | 120 | 87           | 4        | 14     | 10        | - | - | - | - | F316L | TMC 32NB BLIND T/E NON STANDARD ASTM A182 F316L PO# HEAT# |          |
| ** SBF40E | 40NB   | 1 1/2" | N/A | 135 | 98           | 4        | 14     | 10        | - | - | - | - | F316L | TMC 40NB BLIND T/E NON STANDARD ASTM A182 F316L PO# HEAT# |          |
| SBF50E    | 50NB   | 2"     | N/A | 150 | 114          | 4        | 18     | 10        | - | - | - | - | F316L | TMC 50NB BLIND T/E AS2129 ASTM A182 F316L PO# HEAT#       |          |
| SBF65E    | 65NB   | 2 1/2" | N/A | 165 | 127          | 4        | 18     | 10        | - | - | - | - | F316L | TMC 65NB BLIND T/E AS2129 ASTM A182 F316L PO# HEAT#       |          |
| SBF80E    | 80NB   | 3"     | N/A | 185 | 146          | 4        | 18     | 11        | - | - | - | - | F316L | TMC 80NB BLIND T/E AS2129 ASTM A182 F316L PO# HEAT#       |          |
| SBF100E   | 100NB  | 4"     | N/A | 215 | 178          | 8        | 18     | 13        | - | - | - | - | F316L | TMC 100NB BLIND T/E AS2129 ASTM A182 F316L PO# HEAT#      |          |
| SBF125E   | 125NB  | 5"     | N/A | 255 | 210          | 8        | 18     | 14        | - | - | - | - | F316L | TMC 125NB BLIND T/E AS2129 ASTM A182 F316L PO# HEAT#      |          |
| SBF150E   | 150NB  | 6"     | N/A | 280 | 235          | 8        | 22     | 17        | - | - | - | - | F316L | TMC 150NB BLIND T/E AS2129 ASTM A182 F316L PO# HEAT#      |          |
| SBF200E   | 200NB  | 8"     | N/A | 335 | 292          | 8        | 22     | 19        | - | - | - | - | F316L | TMC 200NB BLIND T/E AS2129 ASTM A182 F316L PO# HEAT#      |          |
| SBF250E   | 250NB  | 10"    | N/A | 405 | 356          | 12       | 22     | 22        | - | - | - | - | F316L | TMC 250NB BLIND T/E AS2129 ASTM A182 F316L PO# HEAT#      |          |
| SBF300E   | 300NB  | 12"    | N/A | 455 | 406          | 12       | 26     | 25        | - | - | - | - | F316L | TMC 300NB BLIND T/E AS2129 ASTM A182 F316L PO# HEAT#      |          |
| SBF350E   | 350NB  | 14"    | N/A | 525 | 470          | 12       | 26     | 29        | - | - | - | - | F316L | TMC 350NB BLIND T/E AS2129 ASTM A182 F316L PO# HEAT#      |          |
| SBF400E   | 400NB  | 16"    | N/A | 580 | 521          | 12       | 26     | 32        | - | - | - | - | F316L | TMC 400NB BLIND T/E AS2129 ASTM A182 F316L PO# HEAT#      |          |

\*: All are manufactured to AS2129 Standard, except if stated otherwise. Please note flanges marked with \*\*

\*\* : Thickness exceeds AS2129 standard thickness, this is to avoid unacceptable warpage that can occur if using standard AS2129 thickness. Thickness increased as recommended in the AS2129 standard.



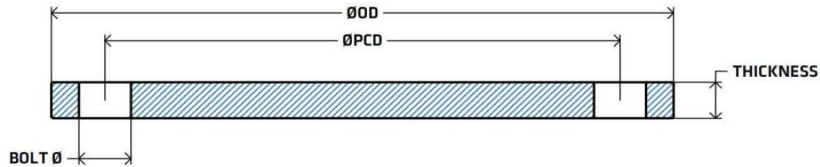
REVISED: 12/09/23

TUBE FLANGE (TO SUIT IMPERIAL TUBE) - TABLE D - AS2129\* - FFSO

| TMC CODE   | SIZE   |        | ØID   | ØOD | BOLT PATTERN |          |        | THICKNESS | A | B | C | D | E | GRADE | MARKINGS   |
|------------|--------|--------|-------|-----|--------------|----------|--------|-----------|---|---|---|---|---|-------|--|
|            | METRIC | INCH   |       |     | ØPCD         | BOLT NO. | BOLT Ø |           |   |   |   |   |   |       |  |
| ** STF25D  | 25.4   | 1"     | 27    | 115 | 83           | 4        | 14     | 10        | - | - | - | - | - | F316L | TMC 25.4 TUBE T/D NON STANDARD ASTM A182 F316L PO# HEAT# |
| ** STF30D  | 31.8   | 1 1/4" | 33.4  | 120 | 87           | 4        | 14     | 10        | - | - | - | - | - | F316L | TMC 31.8 TUBE T/D NON STANDARD ASTM A182 F316L PO# HEAT# |
| ** STF40D  | 38.1   | 1 1/2" | 39.7  | 135 | 98           | 4        | 14     | 10        | - | - | - | - | - | F316L | TMC 38.1 TUBE T/D NON STANDARD ASTM A182 F316L PO# HEAT# |
| ** STF50D  | 50.8   | 2"     | 52.4  | 150 | 114          | 4        | 18     | 10        | - | - | - | - | - | F316L | TMC 50.8 TUBE T/D NON STANDARD ASTM A182 F316L PO# HEAT# |
| ** STF65D  | 63.5   | 2 1/2" | 65.1  | 165 | 127          | 4        | 18     | 10        | - | - | - | - | - | F316L | TMC 63.5 TUBE T/D NON STANDARD ASTM A182 F316L PO# HEAT# |
| ** STF75D  | 76.2   | 3"     | 77.8  | 185 | 146          | 4        | 18     | 10        | - | - | - | - | - | F316L | TMC 76.2 TUBE T/D AS2129 ASTM A182 F316L PO# HEAT#       |
| ** STF100D | 101.6  | 4"     | 103.2 | 215 | 178          | 4        | 18     | 10        | - | - | - | - | - | F316L | TMC 101.6 TUBE T/D AS2129 ASTM A182 F316L PO# HEAT#      |
| ** STF125D | 127    | 5"     | 128.6 | 255 | 210          | 8        | 18     | 13        | - | - | - | - | - | F316L | TMC 127 TUBE T/D AS2129 ASTM A182 F316L PO# HEAT#        |
| ** STF150D | 152.4  | 6"     | 154   | 280 | 235          | 8        | 18     | 13        | - | - | - | - | - | F316L | TMC 152.4 TUBE T/D AS2129 ASTM A182 F316L PO# HEAT#      |

PIPE FLANGE (TO SUIT SCHEDULE PIPE) - TABLE D - AS2129\* - FFSO

| TMC CODE   | SIZE   |        | ØID   | ØOD | BOLT PATTERN |          |        | THICKNESS | A | B | C | D | E | GRADE | MARKINGS   |
|------------|--------|--------|-------|-----|--------------|----------|--------|-----------|---|---|---|---|---|-------|--|
|            | METRIC | INCH   |       |     | ØPCD         | BOLT NO. | BOLT Ø |           |   |   |   |   |   |       |  |
| ** SPF15D  | 15NB   | 1/2"   | 22.3  | 95  | 67           | 4        | 14     | 10        | - | - | - | - | - | F316L | TMC 15NB PIPE T/D NON STANDARD ASTM A182 F316L PO# HEAT# |
| ** SPF20D  | 20NB   | 3/4"   | 27.6  | 100 | 73           | 4        | 14     | 10        | - | - | - | - | - | F316L | TMC 20NB PIPE T/D NON STANDARD ASTM A182 F316L PO# HEAT# |
| ** SPF25D  | 25NB   | 1"     | 34.5  | 115 | 83           | 4        | 14     | 10        | - | - | - | - | - | F316L | TMC 25NB PIPE T/D NON STANDARD ASTM A182 F316L PO# HEAT# |
| ** SPF32D  | 32NB   | 1 1/4" | 43.1  | 120 | 87           | 4        | 14     | 10        | - | - | - | - | - | F316L | TMC 32NB PIPE T/D NON STANDARD ASTM A182 F316L PO# HEAT# |
| ** SPF40D  | 40NB   | 1 1/2" | 49.5  | 135 | 98           | 4        | 14     | 10        | - | - | - | - | - | F316L | TMC 40NB PIPE T/D NON STANDARD ASTM A182 F316L PO# HEAT# |
| ** SPF50D  | 50NB   | 2"     | 61.9  | 150 | 114          | 4        | 18     | 10        | - | - | - | - | - | F316L | TMC 50NB PIPE T/D NON STANDARD ASTM A182 F316L PO# HEAT# |
| ** SPF65D  | 65NB   | 2 1/2" | 74.6  | 165 | 127          | 4        | 18     | 10        | - | - | - | - | - | F316L | TMC 65NB PIPE T/D NON STANDARD ASTM A182 F316L PO# HEAT# |
| ** SPF80D  | 80NB   | 3"     | 90.6  | 185 | 146          | 4        | 18     | 10        | - | - | - | - | - | F316L | TMC 80NB PIPE T/D AS2129 ASTM A182 F316L PO# HEAT#       |
| ** SPF100D | 100NB  | 4"     | 116   | 215 | 178          | 4        | 18     | 10        | - | - | - | - | - | F316L | TMC 100NB PIPE T/D AS2129 ASTM A182 F316L PO# HEAT#      |
| ** SPF125D | 125NB  | 5"     | 143.7 | 255 | 210          | 8        | 18     | 13        | - | - | - | - | - | F316L | TMC 125NB PIPE T/D AS2129 ASTM A182 F316L PO# HEAT#      |
| ** SPF150D | 150NB  | 6"     | 170.6 | 280 | 235          | 8        | 18     | 13        | - | - | - | - | - | F316L | TMC 150NB PIPE T/D AS2129 ASTM A182 F316L PO# HEAT#      |
| ** SPF200D | 200NB  | 8"     | 221.4 | 335 | 292          | 8        | 18     | 13        | - | - | - | - | - | F316L | TMC 200NB PIPE T/D AS2129 ASTM A182 F316L PO# HEAT#      |
| ** SPF250D | 250NB  | 10"    | 276.3 | 405 | 356          | 8        | 22     | 16        | - | - | - | - | - | F316L | TMC 250NB PIPE T/D AS2129 ASTM A182 F316L PO# HEAT#      |
| ** SPF300D | 300NB  | 12"    | 327.1 | 455 | 406          | 12       | 22     | 19        | - | - | - | - | - | F316L | TMC 300NB PIPE T/D AS2129 ASTM A182 F316L PO# HEAT#      |
| ** SPF350D | 350NB  | 14"    | 359.1 | 525 | 470          | 12       | 26     | 22        | - | - | - | - | - | F316L | TMC 350NB PIPE T/D AS2129 ASTM A182 F316L PO# HEAT#      |
| ** SPF400D | 400NB  | 16"    | 410.4 | 580 | 521          | 12       | 26     | 22        | - | - | - | - | - | F316L | TMC 400NB PIPE T/D AS2129 ASTM A182 F316L PO# HEAT#      |



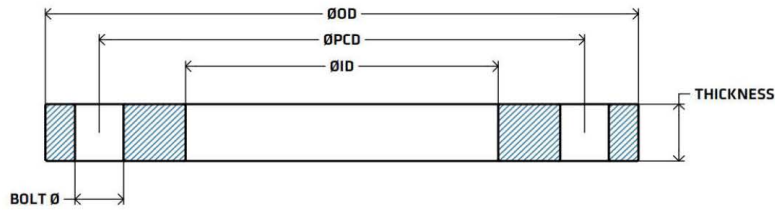
BLIND FLANGE - TABLE D - AS2129\* - FFBF

| TMC CODE   | SIZE   |        | ØID | ØOD | BOLT PATTERN |          |        | THICKNESS | A | B | C | D | E | GRADE | MARKINGS  |
|------------|--------|--------|-----|-----|--------------|----------|--------|-----------|---|---|---|---|---|-------|---|
|            | METRIC | INCH   |     |     | ØPCD         | BOLT NO. | BOLT Ø |           |   |   |   |   |   |       |   |
| ** SBF15D  | 15NB   | 1/2"   | N/A | 95  | 67           | 4        | 14     | 10        | - | - | - | - | - | F316L | TMC 15NB BLIND T/D NON STANDARD ASTM A182 F316L PO# HEAT# |
| ** SBF20D  | 20NB   | 3/4"   | N/A | 100 | 73           | 4        | 14     | 10        | - | - | - | - | - | F316L | TMC 20NB BLIND T/D NON STANDARD ASTM A182 F316L PO# HEAT# |
| ** SBF25D  | 25NB   | 1"     | N/A | 115 | 83           | 4        | 14     | 10        | - | - | - | - | - | F316L | TMC 25NB BLIND T/D NON STANDARD ASTM A182 F316L PO# HEAT# |
| ** SBF32D  | 32NB   | 1 1/4" | N/A | 120 | 87           | 4        | 14     | 10        | - | - | - | - | - | F316L | TMC 32NB BLIND T/D NON STANDARD ASTM A182 F316L PO# HEAT# |
| ** SBF40D  | 40NB   | 1 1/2" | N/A | 135 | 98           | 4        | 14     | 10        | - | - | - | - | - | F316L | TMC 40NB BLIND T/D NON STANDARD ASTM A182 F316L PO# HEAT# |
| ** SBF50D  | 50NB   | 2"     | N/A | 150 | 114          | 4        | 18     | 10        | - | - | - | - | - | F316L | TMC 50NB BLIND T/D NON STANDARD ASTM A182 F316L PO# HEAT# |
| ** SBF65D  | 65NB   | 2 1/2" | N/A | 165 | 127          | 4        | 18     | 10        | - | - | - | - | - | F316L | TMC 65NB BLIND T/D NON STANDARD ASTM A182 F316L PO# HEAT# |
| ** SBF80D  | 80NB   | 3"     | N/A | 185 | 146          | 4        | 18     | 10        | - | - | - | - | - | F316L | TMC 80NB BLIND T/D AS2129 ASTM A182 F316L PO# HEAT#       |
| ** SBF100D | 100NB  | 4"     | N/A | 215 | 178          | 4        | 18     | 10        | - | - | - | - | - | F316L | TMC 100NB BLIND T/D AS2129 ASTM A182 F316L PO# HEAT#      |
| ** SBF125D | 125NB  | 5"     | N/A | 255 | 210          | 8        | 18     | 13        | - | - | - | - | - | F316L | TMC 125NB BLIND T/D AS2129 ASTM A182 F316L PO# HEAT#      |
| ** SBF150D | 150NB  | 6"     | N/A | 280 | 235          | 8        | 18     | 13        | - | - | - | - | - | F316L | TMC 150NB BLIND T/D AS2129 ASTM A182 F316L PO# HEAT#      |
| ** SBF200D | 200NB  | 8"     | N/A | 335 | 292          | 8        | 18     | 13        | - | - | - | - | - | F316L | TMC 200NB BLIND T/D AS2129 ASTM A182 F316L PO# HEAT#      |
| ** SBF250D | 250NB  | 10"    | N/A | 405 | 356          | 8        | 22     | 16        | - | - | - | - | - | F316L | TMC 250NB BLIND T/D AS2129 ASTM A182 F316L PO# HEAT#      |
| ** SBF300D | 300NB  | 12"    | N/A | 455 | 406          | 12       | 22     | 19        | - | - | - | - | - | F316L | TMC 300NB BLIND T/D AS2129 ASTM A182 F316L PO# HEAT#      |
| ** SBF350D | 350NB  | 14"    | N/A | 525 | 470          | 12       | 26     | 22        | - | - | - | - | - | F316L | TMC 350NB BLIND T/D AS2129 ASTM A182 F316L PO# HEAT#      |
| ** SBF400D | 400NB  | 16"    | N/A | 580 | 521          | 12       | 26     | 22        | - | - | - | - | - | F316L | TMC 400NB BLIND T/D AS2129 ASTM A182 F316L PO# HEAT#      |

\*: All are manufactured to AS2129 Standard, except if stated otherwise. Please note flanges marked with \*\*

\*\* : Thickness exceeds AS2129 standard thickness, this is to avoid unacceptable warpage that can occur if using standard AS2129 thickness. Thickness increased as recommended in the AS2129 standard.





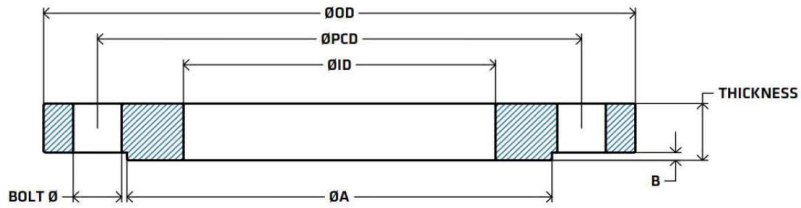
REVISED: 12/09/23

**TUBE FLANGE (TO SUIT IMPERIAL TUBE) - PN10/16/40 - EN1092-1 TYPE 01/A - FFSO**

| TMC CODE      | SIZE   |        | ØID   | ØOD | BOLT PATTERN |          |        | THICKNESS | A | B | C | D | E | GRADE  | MARKINGS  |
|---------------|--------|--------|-------|-----|--------------|----------|--------|-----------|---|---|---|---|---|--------|---|
|               | METRIC | INCH   |       |     | ØPCD         | BOLT NO. | BOLT Ø |           |   |   |   |   |   |        |   |
| STF25PN10-40  | 25.4   | 1"     | 27    | 115 | 85           | 4        | 14     | 16        | - | - | - | - | - | 1.4404 | TMC 25.4 TUBE PN10-40 EN1092-1 01/A EN10222-5 1.4404 PO# HEAT#  |
| STF30PN10-40  | 31.8   | 1 1/4" | 33.4  | 140 | 100          | 4        | 18     | 18        | - | - | - | - | - | 1.4404 | TMC 31.8 TUBE PN10-40 EN1092-1 01/A EN10222-5 1.4404 PO# HEAT#  |
| STF40PN10-40  | 38.1   | 1 1/2" | 39.7  | 150 | 110          | 4        | 18     | 18        | - | - | - | - | - | 1.4404 | TMC 38.1 TUBE PN10-40 EN1092-1 01/A EN10222-5 1.4404 PO# HEAT#  |
| STF50PN10-40  | 50.8   | 2"     | 52.4  | 165 | 125          | 4        | 18     | 20        | - | - | - | - | - | 1.4404 | TMC 50.8 TUBE PN10-16 EN1092-1 01/A EN10222-5 1.4404 PO# HEAT#  |
| STF65PN10-16  | 63.5   | 2 1/2" | 65.1  | 185 | 145          | 8        | 18     | 20        | - | - | - | - | - | 1.4404 | TMC 63.5 TUBE PN10-16 EN1092-1 01/A EN10222-5 1.4404 PO# HEAT#  |
| STF75PN10-16  | 76.2   | 3"     | 77.8  | 200 | 160          | 8        | 18     | 20        | - | - | - | - | - | 1.4404 | TMC 76.2 TUBE PN10-16 EN1092-1 01/A EN10222-5 1.4404 PO# HEAT#  |
| STF100PN10-16 | 101.6  | 4"     | 103.2 | 220 | 180          | 8        | 18     | 22        | - | - | - | - | - | 1.4404 | TMC 101.6 TUBE PN10-16 EN1092-1 01/A EN10222-5 1.4404 PO# HEAT# |
| STF125PN10-16 | 127    | 5"     | 128.6 | 250 | 210          | 8        | 18     | 22        | - | - | - | - | - | 1.4404 | TMC 127 TUBE PN10-16 EN1092-1 01/A EN10222-5 1.4404 PO# HEAT#   |
| STF150PN10-16 | 152.4  | 6"     | 154   | 285 | 240          | 8        | 22     | 24        | - | - | - | - | - | 1.4404 | TMC 152.4 TUBE PN10-16 EN1092-1 01/A EN10222-5 1.4404 PO# HEAT# |
| STF200PN16    | 203.2  | 8"     | 204.8 | 340 | 295          | 12       | 22     | 26        | - | - | - | - | - | 1.4404 | TMC 203.2 TUBE PN16 EN1092-1 01/A EN10222-5 1.4404 PO# HEAT#    |

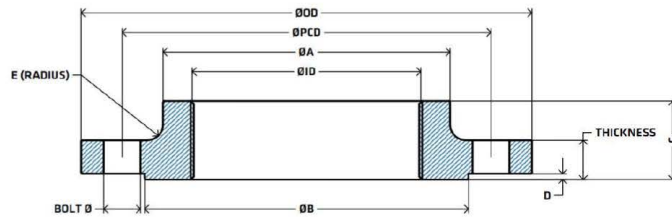
**SPIRAL WELD FLANGE (TO SUIT ID TUBE) - PN16 - EN1092-1 TYPE 01/A - FFSO**

| TMC CODE    | SIZE     |      | ØID   | ØOD | BOLT PATTERN |          |        | THICKNESS | A | B | C | D | E | GRADE  | MARKINGS  |
|-------------|----------|------|-------|-----|--------------|----------|--------|-----------|---|---|---|---|---|--------|---|
|             | METRIC   | INCH |       |     | ØPCD         | BOLT NO. | BOLT Ø |           |   |   |   |   |   |        |   |
| SSWF200PN16 | 203.2 ID | 8"   | 208.8 | 340 | 295          | 12       | 22     | 26        | - | - | - | - | - | 1.4404 | TMC 203.2 ID SW PN16 EN1092-1 01/A EN10222-5 1.4404 PO# HEAT# |
| SSWF250PN16 | 254 ID   | 10"  | 261.6 | 405 | 355          | 12       | 26     | 29        | - | - | - | - | - | 1.4404 | TMC 254 ID SW PN16 EN1092-1 01/A EN10222-5 1.4404 PO# HEAT#   |
| SSWF300PN16 | 304.8 ID | 12"  | 312.4 | 460 | 410          | 12       | 26     | 32        | - | - | - | - | - | 1.4404 | TMC 304.8 ID SW PN16 EN1092-1 01/A EN10222-5 1.4404 PO# HEAT# |



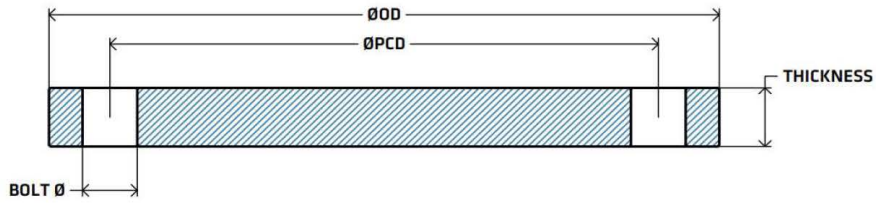
**PIPE FLANGE (TO SUIT SCHEDULE PIPE) - PN10/16/40 - EN1092-1 TYPE 01/B1 - RFSO**

| TMC CODE      | SIZE   |        | ØID   | ØOD | BOLT PATTERN |          |        | THICKNESS | A   | B | C | D | E | GRADE  | MARKINGS   |
|---------------|--------|--------|-------|-----|--------------|----------|--------|-----------|-----|---|---|---|---|--------|--|
|               | METRIC | INCH   |       |     | ØPCD         | BOLT NO. | BOLT Ø |           |     |   |   |   |   |        |  |
| SPF15PN10-40  | 15NB   | 1/2"   | 22    | 95  | 65           | 4        | 14     | 14        | 45  | 2 | - | - | - | 1.4404 | TMC 15NB PIPE PN10-40 EN1092-1 01/B1 EN10222-5 1.4404 PO# HEAT#  |
| SPF20PN10-40  | 20NB   | 3/4"   | 27.5  | 105 | 75           | 4        | 14     | 16        | 58  | 2 | - | - | - | 1.4404 | TMC 20NB PIPE PN10-40 EN1092-1 01/B1 EN10222-5 1.4404 PO# HEAT#  |
| SPF25PN10-40  | 25NB   | 1"     | 34.5  | 115 | 85           | 4        | 14     | 16        | 68  | 2 | - | - | - | 1.4404 | TMC 25NB PIPE PN10-40 EN1092-1 01/B1 EN10222-5 1.4404 PO# HEAT#  |
| SPF32PN10-40  | 32NB   | 1 1/4" | 43.5  | 140 | 100          | 4        | 18     | 18        | 78  | 2 | - | - | - | 1.4404 | TMC 32NB PIPE PN10-40 EN1092-1 01/B1 EN10222-5 1.4404 PO# HEAT#  |
| SPF40PN10-40  | 40NB   | 1 1/2" | 49.5  | 150 | 110          | 4        | 18     | 18        | 88  | 3 | - | - | - | 1.4404 | TMC 40NB PIPE PN10-40 EN1092-1 01/B1 EN10222-5 1.4404 PO# HEAT#  |
| SPF50PN10-16  | 50NB   | 2"     | 61.5  | 165 | 125          | 4        | 18     | 20        | 102 | 3 | - | - | - | 1.4404 | TMC 50NB PIPE PN10-16 EN1092-1 01/B1 EN10222-5 1.4404 PO# HEAT#  |
| SPF65PN10-16  | 65NB   | 2 1/2" | 77.5  | 185 | 145          | 8        | 18     | 20        | 122 | 3 | - | - | - | 1.4404 | TMC 65NB PIPE PN10-16 EN1092-1 01/B1 EN10222-5 1.4404 PO# HEAT#  |
| SPF80PN10-16  | 80NB   | 3"     | 90.5  | 200 | 160          | 8        | 18     | 20        | 138 | 3 | - | - | - | 1.4404 | TMC 80NB PIPE PN10-16 EN1092-1 01/B1 EN10222-5 1.4404 PO# HEAT#  |
| SPF100PN10-16 | 100NB  | 4"     | 116   | 220 | 180          | 8        | 18     | 22        | 158 | 3 | - | - | - | 1.4404 | TMC 100NB PIPE PN10-16 EN1092-1 01/B1 EN10222-5 1.4404 PO# HEAT# |
| SPF125PN10-16 | 125NB  | 5"     | 141.5 | 250 | 210          | 8        | 18     | 22        | 188 | 3 | - | - | - | 1.4404 | TMC 125NB PIPE PN10-16 EN1092-1 01/B1 EN10222-5 1.4404 PO# HEAT# |
| SPF150PN10-16 | 150NB  | 6"     | 170.5 | 285 | 240          | 8        | 22     | 24        | 212 | 3 | - | - | - | 1.4404 | TMC 150NB PIPE PN10-16 EN1092-1 01/B1 EN10222-5 1.4404 PO# HEAT# |
| SPF200PN16    | 200NB  | 8"     | 221.5 | 340 | 295          | 12       | 22     | 26        | 268 | 3 | - | - | - | 1.4404 | TMC 200NB PIPE PN16 EN1092-1 01/B1 EN10222-5 1.4404 PO# HEAT#    |
| SPF250PN16    | 250NB  | 10"    | 276.5 | 405 | 355          | 12       | 26     | 29        | 320 | 3 | - | - | - | 1.4404 | TMC 250NB PIPE PN16 EN1092-1 01/B1 EN10222-5 1.4404 PO# HEAT#    |
| SPF300PN16    | 300NB  | 12"    | 327.5 | 460 | 410          | 12       | 26     | 32        | 378 | 4 | - | - | - | 1.4404 | TMC 300NB PIPE PN16 EN1092-1 01/B1 EN10222-5 1.4404 PO# HEAT#    |
| SPF350PN16    | 350NB  | 14"    | 359.5 | 520 | 470          | 16       | 26     | 35        | 438 | 4 | - | - | - | 1.4404 | TMC 350NB PIPE PN16 EN1092-1 01/B1 EN10222-5 1.4404 PO# HEAT#    |
| SPF400PN16    | 400NB  | 16"    | 411   | 580 | 525          | 16       | 30     | 38        | 490 | 4 | - | - | - | 1.4404 | TMC 400NB PIPE PN16 EN1092-1 01/B1 EN10222-5 1.4404 PO# HEAT#    |



**BSP THREADED FLANGE - PN10/16/40 - EN1092-1 TYPE 13/B1 - RFTH**

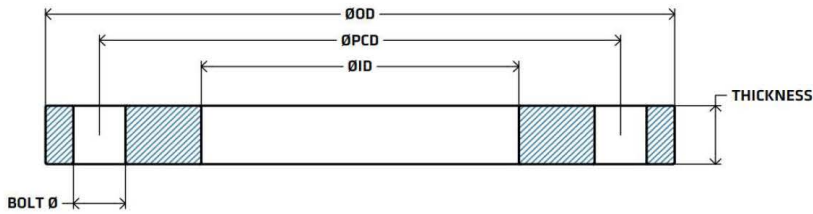
| TMC CODE        | SIZE   |        | ØID         | ØOD | BOLT PATTERN |          |        | THICKNESS | A   | B   | C  | D | E | GRADE  | MARKINGS  |
|-----------------|--------|--------|-------------|-----|--------------|----------|--------|-----------|-----|-----|----|---|---|--------|---|
|                 | METRIC | INCH   |             |     | ØPCD         | BOLT NO. | BOLT Ø |           |     |     |    |   |   |        |   |
| SBSPF25PN10-40  | 25NB   | 1"     | 1" BSPP     | 115 | 85           | 4        | 14     | 18        | 52  | 68  | 28 | 2 | 4 | 1.4404 | TMC 25NB BSP PN10-40 EN1092-1 13/B1 EN10222-5 1.4404 PO# HEAT#  |
| SBSPF40PN10-40  | 40NB   | 1 1/2" | 1 1/2" BSPP | 150 | 110          | 4        | 18     | 18        | 70  | 88  | 32 | 3 | 6 | 1.4404 | TMC 40NB BSP PN10-40 EN1092-1 13/B1 EN10222-5 1.4404 PO# HEAT#  |
| SBSPF50PN10-16  | 50NB   | 2"     | 2" BSPP     | 165 | 125          | 4        | 18     | 18        | 84  | 102 | 28 | 3 | 6 | 1.4404 | TMC 50NB BSP PN10-16 EN1092-1 13/B1 EN10222-5 1.4404 PO# HEAT#  |
| SBSPF80PN10-16  | 80NB   | 3"     | 3" BSPP     | 200 | 160          | 8        | 18     | 20        | 118 | 138 | 34 | 3 | 6 | 1.4404 | TMC 80NB BSP PN10-16 EN1092-1 13/B1 EN10222-5 1.4404 PO# HEAT#  |
| SBSPF100PN10-16 | 100NB  | 4"     | 4" BSPP     | 220 | 180          | 8        | 18     | 20        | 140 | 158 | 40 | 3 | 8 | 1.4404 | TMC 100NB BSP PN10-16 EN1092-1 13/B1 EN10222-5 1.4404 PO# HEAT# |



REVISED: 12/09/23

BLIND FLANGE - PN10/16/40 - EN1092-1 TYPE 05/A - FFBL

| TMC CODE      | SIZE   |        | ØID | ØOD | BOLT PATTERN |          |        | THICKNESS | A | B | C | D | E | GRADE  | MARKINGS   |
|---------------|--------|--------|-----|-----|--------------|----------|--------|-----------|---|---|---|---|---|--------|--|
|               | METRIC | INCH   |     |     | ØPCD         | BOLT NO. | BOLT Ø |           |   |   |   |   |   |        |  |
| SBF15PN10-40  | 15NB   | 1/2"   | N/A | 95  | 65           | 4        | 14     | 16        | - | - | - | - | - | 1.4404 | TMC 15NB BLIND PN10-40 EN1092-1 05/A EN10222-5 1.4404 PO# HEAT#  |
| SBF20PN10-40  | 20NB   | 3/4"   | N/A | 105 | 75           | 4        | 14     | 18        | - | - | - | - | - | 1.4404 | TMC 20NB BLIND PN10-40 EN1092-1 05/A EN10222-5 1.4404 PO# HEAT#  |
| SBF25PN10-40  | 25NB   | 1"     | N/A | 115 | 85           | 4        | 14     | 18        | - | - | - | - | - | 1.4404 | TMC 25NB BLIND PN10-40 EN1092-1 05/A EN10222-5 1.4404 PO# HEAT#  |
| SBF32PN10-40  | 32NB   | 1 1/4" | N/A | 140 | 100          | 4        | 18     | 18        | - | - | - | - | - | 1.4404 | TMC 32NB BLIND PN10-40 EN1092-1 05/A EN10222-5 1.4404 PO# HEAT#  |
| SBF40PN10-40  | 40NB   | 1 1/2" | N/A | 150 | 110          | 4        | 18     | 18        | - | - | - | - | - | 1.4404 | TMC 40NB BLIND PN10-40 EN1092-1 05/A EN10222-5 1.4404 PO# HEAT#  |
| SBF50PN10-16  | 50NB   | 2"     | N/A | 165 | 125          | 4        | 18     | 18        | - | - | - | - | - | 1.4404 | TMC 50NB BLIND PN10-16 EN1092-1 05/A EN10222-5 1.4404 PO# HEAT#  |
| SBF65PN10-16  | 65NB   | 2 1/2" | N/A | 185 | 145          | 8        | 18     | 18        | - | - | - | - | - | 1.4404 | TMC 65NB BLIND PN10-16 EN1092-1 05/A EN10222-5 1.4404 PO# HEAT#  |
| SBF80PN10-16  | 80NB   | 3"     | N/A | 200 | 160          | 8        | 18     | 20        | - | - | - | - | - | 1.4404 | TMC 80NB BLIND PN10-16 EN1092-1 05/A EN10222-5 1.4404 PO# HEAT#  |
| SBF100PN10-16 | 100NB  | 4"     | N/A | 220 | 180          | 8        | 18     | 20        | - | - | - | - | - | 1.4404 | TMC 100NB BLIND PN10-16 EN1092-1 05/A EN10222-5 1.4404 PO# HEAT# |
| SBF125PN10-16 | 125NB  | 5"     | N/A | 250 | 210          | 8        | 18     | 22        | - | - | - | - | - | 1.4404 | TMC 125NB BLIND PN10-16 EN1092-1 05/A EN10222-5 1.4404 PO# HEAT# |
| SBF150PN10-16 | 150NB  | 6"     | N/A | 285 | 240          | 8        | 22     | 22        | - | - | - | - | - | 1.4404 | TMC 150NB BLIND PN10-16 EN1092-1 05/A EN10222-5 1.4404 PO# HEAT# |
| SBF200PN16    | 200NB  | 8"     | N/A | 340 | 295          | 12       | 22     | 24        | - | - | - | - | - | 1.4404 | TMC 200NB BLIND PN16 EN1092-1 05/A EN10222-5 1.4404 PO# HEAT#    |
| SBF250PN16    | 250NB  | 10"    | N/A | 405 | 355          | 12       | 26     | 26        | - | - | - | - | - | 1.4404 | TMC 250NB BLIND PN16 EN1092-1 05/A EN10222-5 1.4404 PO# HEAT#    |
| SBF300PN16    | 300NB  | 12"    | N/A | 460 | 410          | 12       | 26     | 28        | - | - | - | - | - | 1.4404 | TMC 300NB BLIND PN16 EN1092-1 05/A EN10222-5 1.4404 PO# HEAT#    |
| SBF350PN16    | 350NB  | 14"    | N/A | 520 | 470          | 16       | 26     | 30        | - | - | - | - | - | 1.4404 | TMC 350NB BLIND PN16 EN1092-1 05/A EN10222-5 1.4404 PO# HEAT#    |
| SBF400PN16    | 400NB  | 16"    | N/A | 580 | 525          | 16       | 30     | 32        | - | - | - | - | - | 1.4404 | TMC 400NB BLIND PN16 EN1092-1 05/A EN10222-5 1.4404 PO# HEAT#    |



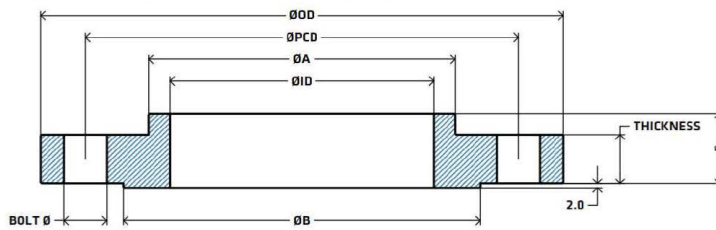
REVISED: 12/09/23

TUBE FLANGE (TO SUIT IMPERIAL TUBE) - ANSI 150 - ASME B16.5\* - FFSO

| TMC CODE      | SIZE   |        | ØID   | ØOD | BOLT PATTERN |          |        | THICKNESS | A | B | C | D | E | GRADE | MARKINGS   |
|---------------|--------|--------|-------|-----|--------------|----------|--------|-----------|---|---|---|---|---|-------|--|
|               | METRIC | INCH   |       |     | ØPCD         | BOLT NO. | BOLT Ø |           |   |   |   |   |   |       |  |
| ** STF25A150  | 25.4   | 1"     | 27    | 110 | 79.4         | 4        | 15.88  | 12.7      | - | - | - | - | - | F316L | TMC 25.4 TUBE ANSI 150 NON HUBBED ASTM A182 F316L PO# HEAT#  |
| ** STF30A150  | 31.8   | 1 1/4" | 33.4  | 115 | 88.9         | 4        | 15.88  | 14.3      | - | - | - | - | - | F316L | TMC 31.8 TUBE ANSI 150 NON HUBBED ASTM A182 F316L PO# HEAT#  |
| ** STF40A150  | 38.1   | 1 1/2" | 39.7  | 125 | 98.4         | 4        | 15.88  | 15.9      | - | - | - | - | - | F316L | TMC 38.1 TUBE ANSI 150 NON HUBBED ASTM A182 F316L PO# HEAT#  |
| ** STF50A150  | 50.8   | 2"     | 52.4  | 150 | 120.7        | 4        | 19.05  | 17.5      | - | - | - | - | - | F316L | TMC 50.8 TUBE ANSI 150 NON HUBBED ASTM A182 F316L PO# HEAT#  |
| ** STF65A150  | 63.5   | 2 1/2" | 65.1  | 180 | 139.7        | 4        | 19.05  | 20.7      | - | - | - | - | - | F316L | TMC 63.5 TUBE ANSI 150 NON HUBBED ASTM A182 F316L PO# HEAT#  |
| ** STF75A150  | 76.2   | 3"     | 77.8  | 190 | 152.4        | 4        | 19.05  | 22.3      | - | - | - | - | - | F316L | TMC 76.2 TUBE ANSI 150 NON HUBBED ASTM A182 F316L PO# HEAT#  |
| ** STF100A150 | 101.6  | 4"     | 103.2 | 230 | 190.5        | 8        | 19.05  | 22.3      | - | - | - | - | - | F316L | TMC 101.6 TUBE ANSI 150 NON HUBBED ASTM A182 F316L PO# HEAT# |
| ** STF125A150 | 127    | 5"     | 128.6 | 255 | 215.9        | 8        | 22.22  | 22.3      | - | - | - | - | - | F316L | TMC 127 TUBE ANSI 150 NON HUBBED ASTM A182 F316L PO# HEAT#   |
| ** STF150A150 | 152.4  | 6"     | 154   | 280 | 241.3        | 8        | 22.22  | 23.9      | - | - | - | - | - | F316L | TMC 152.4 TUBE ANSI 150 NON HUBBED ASTM A182 F316L PO# HEAT# |
| ** STF200A150 | 203.2  | 8"     | 204.8 | 345 | 298.5        | 8        | 22.22  | 27        | - | - | - | - | - | F316L | TMC 203.2 TUBE ANSI 150 NON HUBBED ASTM A182 F316L PO# HEAT# |

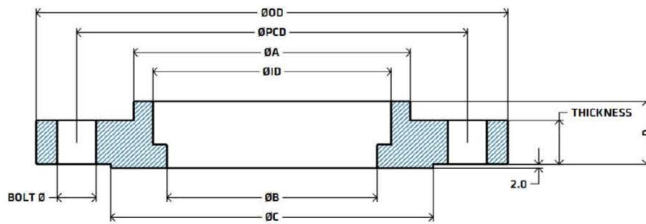
SPIRAL WELD FLANGE (TO SUIT ID TUBE) - ANSI 150 - ASME B16.5\* - FFSO

| TMC CODE       | SIZE     |      | ØID   | ØOD | BOLT PATTERN |          |        | THICKNESS | A | B | C | D | E | GRADE | MARKINGS  |
|----------------|----------|------|-------|-----|--------------|----------|--------|-----------|---|---|---|---|---|-------|---|
|                | METRIC   | INCH |       |     | ØPCD         | BOLT NO. | BOLT Ø |           |   |   |   |   |   |       |   |
| ** SSWF200A150 | 203.2 ID | 8"   | 208.8 | 345 | 298.5        | 8        | 22.22  | 27        | - | - | - | - | - | F316L | TMC 203.2 ID SW ANSI 150 NON HUBBED ASTM A182 F316L PO# HEAT# |
| ** SSWF250A150 | 254 ID   | 10"  | 261.6 | 405 | 362          | 12       | 25.4   | 28.6      | - | - | - | - | - | F316L | TMC 254 ID SW ANSI 150 NON HUBBED ASTM A182 F316L PO# HEAT#   |
| ** SSWF300A150 | 304.8 ID | 12"  | 312.4 | 485 | 431.8        | 12       | 25.4   | 30.2      | - | - | - | - | - | F316L | TMC 304.8 ID SW ANSI 150 NON HUBBED ASTM A182 F316L PO# HEAT# |



PIPE FLANGE (TO SUIT SCHEDULE PIPE) - ANSI 150 - ASME B16.5 - RFSO

| TMC CODE   | SIZE   |        | ØID   | ØOD | BOLT PATTERN |          |        | THICKNESS | A   | B     | C  | D | E | GRADE | MARKINGS   |
|------------|--------|--------|-------|-----|--------------|----------|--------|-----------|-----|-------|----|---|---|-------|--|
|            | METRIC | INCH   |       |     | ØPCD         | BOLT NO. | BOLT Ø |           |     |       |    |   |   |       |  |
| SPF15A150  | 15NB   | 1/2"   | 22.2  | 90  | 60.3         | 4        | 15.88  | 9.6       | 30  | 34.9  | 14 | - | - | F316L | TMC 15NB PIPE ANSI 150 ASME B16.5 ASTM A182 F316L PO# HEAT#  |
| SPF20A150  | 20NB   | 3/4"   | 27.7  | 100 | 69.9         | 4        | 15.88  | 11.2      | 38  | 42.9  | 14 | - | - | F316L | TMC 20NB PIPE ANSI 150 ASME B16.5 ASTM A182 F316L PO# HEAT#  |
| SPF25A150  | 25NB   | 1"     | 34.5  | 110 | 79.4         | 4        | 15.88  | 12.7      | 49  | 50.8  | 16 | - | - | F316L | TMC 25NB PIPE ANSI 150 ASME B16.5 ASTM A182 F316L PO# HEAT#  |
| SPF32A150  | 32NB   | 1 1/4" | 43.2  | 115 | 88.9         | 4        | 15.88  | 14.3      | 59  | 63.5  | 19 | - | - | F316L | TMC 32NB PIPE ANSI 150 ASME B16.5 ASTM A182 F316L PO# HEAT#  |
| SPF40A150  | 40NB   | 1 1/2" | 49.5  | 125 | 98.4         | 4        | 15.88  | 15.9      | 65  | 73    | 21 | - | - | F316L | TMC 40NB PIPE ANSI 150 ASME B16.5 ASTM A182 F316L PO# HEAT#  |
| SPF50A150  | 50NB   | 2"     | 61.9  | 150 | 120.7        | 4        | 19.05  | 17.5      | 78  | 92.1  | 24 | - | - | F316L | TMC 50NB PIPE ANSI 150 ASME B16.5 ASTM A182 F316L PO# HEAT#  |
| SPF65A150  | 65NB   | 2 1/2" | 74.6  | 180 | 139.7        | 4        | 19.05  | 20.7      | 90  | 104.8 | 27 | - | - | F316L | TMC 65NB PIPE ANSI 150 ASME B16.5 ASTM A182 F316L PO# HEAT#  |
| SPF80A150  | 80NB   | 3"     | 90.7  | 190 | 152.4        | 4        | 19.05  | 22.3      | 108 | 127   | 29 | - | - | F316L | TMC 80NB PIPE ANSI 150 ASME B16.5 ASTM A182 F316L PO# HEAT#  |
| SPF100A150 | 100NB  | 4"     | 116.1 | 230 | 190.5        | 8        | 19.05  | 22.3      | 135 | 157.2 | 32 | - | - | F316L | TMC 100NB PIPE ANSI 150 ASME B16.5 ASTM A182 F316L PO# HEAT# |
| SPF125A150 | 125NB  | 5"     | 143.8 | 255 | 215.9        | 8        | 22.22  | 22.3      | 164 | 185.7 | 35 | - | - | F316L | TMC 125NB PIPE ANSI 150 ASME B16.5 ASTM A182 F316L PO# HEAT# |
| SPF150A150 | 150NB  | 6"     | 170.7 | 280 | 241.3        | 8        | 22.22  | 23.9      | 192 | 215.9 | 38 | - | - | F316L | TMC 150NB PIPE ANSI 150 ASME B16.5 ASTM A182 F316L PO# HEAT# |
| SPF200A150 | 200NB  | 8"     | 221.5 | 345 | 298.5        | 8        | 22.22  | 27        | 246 | 269.9 | 43 | - | - | F316L | TMC 200NB PIPE ANSI 150 ASME B16.5 ASTM A182 F316L PO# HEAT# |
| SPF250A150 | 250NB  | 10"    | 276.2 | 405 | 362          | 12       | 25.4   | 28.6      | 305 | 323.8 | 48 | - | - | F316L | TMC 250NB PIPE ANSI 150 ASME B16.5 ASTM A182 F316L PO# HEAT# |
| SPF300A150 | 300NB  | 12"    | 327   | 485 | 431.8        | 12       | 25.4   | 30.2      | 365 | 381   | 54 | - | - | F316L | TMC 300NB PIPE ANSI 150 ASME B16.5 ASTM A182 F316L PO# HEAT# |
| SPF350A150 | 350NB  | 14"    | 359.2 | 535 | 476.3        | 12       | 28.57  | 33.4      | 400 | 412.8 | 56 | - | - | F316L | TMC 350NB PIPE ANSI 150 ASME B16.5 ASTM A182 F316L PO# HEAT# |
| SPF400A150 | 400NB  | 16"    | 410.5 | 595 | 539.8        | 16       | 28.57  | 35        | 457 | 469.9 | 62 | - | - | F316L | TMC 400NB PIPE ANSI 150 ASME B16.5 ASTM A182 F316L PO# HEAT# |

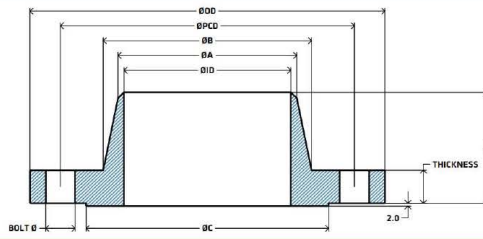


SOCKET WELD FLANGE (TO SUIT SCHEDULE PIPE) - ANSI 150 - ASME B16.5 - RFSW

| TMC CODE     | SIZE   |        | ØID  | ØOD | BOLT PATTERN |          |        | THICKNESS | A  | B    | C    | D  | E | GRADE | MARKINGS  |
|--------------|--------|--------|------|-----|--------------|----------|--------|-----------|----|------|------|----|---|-------|---|
|              | METRIC | INCH   |      |     | ØPCD         | BOLT NO. | BOLT Ø |           |    |      |      |    |   |       |   |
| SPF15A150-SW | 15NB   | 1/2"   | 22.2 | 90  | 60.3         | 4        | 15.88  | 9.6       | 30 | 15.8 | 34.9 | 14 | - | F316L | TMC 15NB PIPE ANSI 150 ASME B16.5 ASTM A182 F316L PO# HEAT# |
| SPF20A150-SW | 20NB   | 3/4"   | 27.7 | 100 | 69.9         | 4        | 15.88  | 11.2      | 38 | 20.9 | 42.9 | 14 | - | F316L | TMC 20NB PIPE ANSI 150 ASME B16.5 ASTM A182 F316L PO# HEAT# |
| SPF25A150-SW | 25NB   | 1"     | 34.5 | 110 | 79.4         | 4        | 15.88  | 12.7      | 49 | 26.6 | 50.8 | 16 | - | F316L | TMC 25NB PIPE ANSI 150 ASME B16.5 ASTM A182 F316L PO# HEAT# |
| SPF32A150-SW | 32NB   | 1 1/4" | 43.2 | 115 | 88.9         | 4        | 15.88  | 14.3      | 59 | 35.1 | 63.5 | 19 | - | F316L | TMC 32NB PIPE ANSI 150 ASME B16.5 ASTM A182 F316L PO# HEAT# |
| SPF40A150-SW | 40NB   | 1 1/2" | 49.5 | 125 | 98.4         | 4        | 15.88  | 15.9      | 65 | 40.9 | 73   | 21 | - | F316L | TMC 40NB PIPE ANSI 150 ASME B16.5 ASTM A182 F316L PO# HEAT# |
| SPF50A150-SW | 50NB   | 2"     | 61.9 | 150 | 120.7        | 4        | 19.05  | 17.5      | 78 | 52.5 | 92.1 | 24 | - | F316L | TMC 50NB PIPE ANSI 150 ASME B16.5 ASTM A182 F316L PO# HEAT# |

\*: All are manufactured to ASME B16.5 Standard, except if stated otherwise. Please note flanges marked with \*\*  
 \*\*: Not manufactured to ASME B16.5 Standard. These are NON HUBBED FFSO. Bolt Pattern Matches ASME B16.5 however overall flange does not meet standard





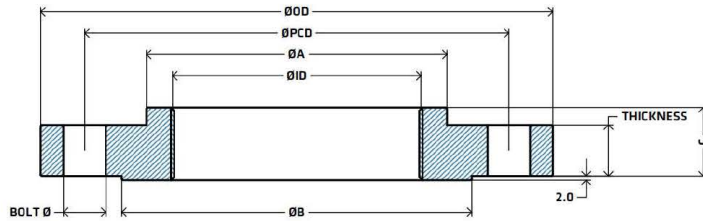
REVISED: 12/09/23

WELD NECK FLANGE (TO SUIT SCHEDULE 10S PIPE) - SCHEDULE 10S - ANSI 150 - ASME B16.5 - RFWN

| TMC CODE         | SIZE   |        | ØID   | ØOD | BOLT PATTERN |          |        | THICKNESS | A     | B   | C     | D  | E | GRADE | MARKINGS   |
|------------------|--------|--------|-------|-----|--------------|----------|--------|-----------|-------|-----|-------|----|---|-------|--|
|                  | METRIC | INCH   |       |     | ØPCD         | BOLT NO. | BOLT Ø |           |       |     |       |    |   |       |  |
| SPF15A150S10-WN  | 15NB   | 1/2"   | 17.12 | 90  | 60.3         | 4        | 15.88  | 9.6       | 21.3  | 30  | 34.9  | 46 | - | F316L | TMC 15NB PIPE S10 ANSI 150 ASME B16.5 ASTM A182 F316L PO# HEAT#  |
| SPF20A150S10-WN  | 20NB   | 3/4"   | 22.45 | 100 | 69.9         | 4        | 15.88  | 11.2      | 26.7  | 38  | 42.9  | 51 | - | F316L | TMC 20NB PIPE S10 ANSI 150 ASME B16.5 ASTM A182 F316L PO# HEAT#  |
| SPF25A150S10-WN  | 25NB   | 1"     | 27.86 | 110 | 79.4         | 4        | 15.88  | 12.7      | 33.4  | 49  | 50.8  | 54 | - | F316L | TMC 25NB PIPE S10 ANSI 150 ASME B16.5 ASTM A182 F316L PO# HEAT#  |
| SPF32A150S10-WN  | 32NB   | 1 1/4" | 36.63 | 115 | 88.9         | 4        | 15.88  | 14.3      | 42.2  | 59  | 63.5  | 56 | - | F316L | TMC 32NB PIPE S10 ANSI 150 ASME B16.5 ASTM A182 F316L PO# HEAT#  |
| SPF40A150S10-WN  | 40NB   | 1 1/2" | 42.72 | 125 | 98.4         | 4        | 15.88  | 15.9      | 48.3  | 65  | 73    | 60 | - | F316L | TMC 40NB PIPE S10 ANSI 150 ASME B16.5 ASTM A182 F316L PO# HEAT#  |
| SPF50A150S10-WN  | 50NB   | 2"     | 54.79 | 150 | 120.7        | 4        | 19.05  | 17.5      | 60.3  | 78  | 92.1  | 62 | - | F316L | TMC 50NB PIPE S10 ANSI 150 ASME B16.5 ASTM A182 F316L PO# HEAT#  |
| SPF65A150S10-WN  | 65NB   | 2 1/2" | 66.93 | 180 | 139.7        | 4        | 19.05  | 20.7      | 73    | 90  | 104.8 | 68 | - | F316L | TMC 65NB PIPE S10 ANSI 150 ASME B16.5 ASTM A182 F316L PO# HEAT#  |
| SPF80A150S10-WN  | 80NB   | 3"     | 82.8  | 190 | 152.4        | 4        | 19.05  | 22.3      | 88.9  | 108 | 127   | 68 | - | F316L | TMC 80NB PIPE S10 ANSI 150 ASME B16.5 ASTM A182 F316L PO# HEAT#  |
| SPF100A150S10-WN | 100NB  | 4"     | 108.2 | 230 | 190.5        | 8        | 19.05  | 22.3      | 114.3 | 135 | 157.2 | 75 | - | F316L | TMC 100NB PIPE S10 ANSI 150 ASME B16.5 ASTM A182 F316L PO# HEAT# |

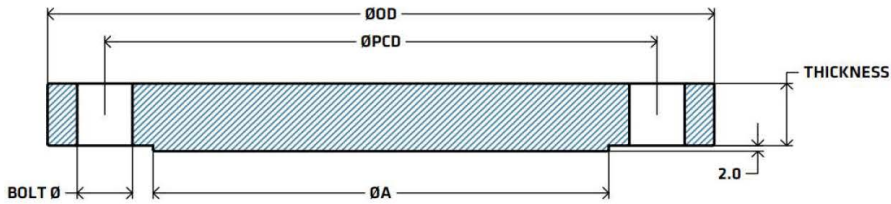
WELD NECK FLANGE (TO SUIT SCHEDULE 40S PIPE) - SCHEDULE 40S - ANSI 150 - ASME B16.5 - RFWN

| TMC CODE         | SIZE   |        | ØID    | ØOD | BOLT PATTERN |          |        | THICKNESS | A     | B   | C     | D  | E | GRADE | MARKINGS   |
|------------------|--------|--------|--------|-----|--------------|----------|--------|-----------|-------|-----|-------|----|---|-------|--|
|                  | METRIC | INCH   |        |     | ØPCD         | BOLT NO. | BOLT Ø |           |       |     |       |    |   |       |  |
| SPF15A150S40-WN  | 15NB   | 1/2"   | 15.8   | 90  | 60.3         | 4        | 15.88  | 9.6       | 21.3  | 30  | 34.9  | 46 | - | F316L | TMC 15NB PIPE S40 ANSI 150 ASME B16.5 ASTM A182 F316L PO# HEAT#  |
| SPF20A150S40-WN  | 20NB   | 3/4"   | 20.93  | 100 | 69.9         | 4        | 15.88  | 11.2      | 26.7  | 38  | 42.9  | 51 | - | F316L | TMC 20NB PIPE S40 ANSI 150 ASME B16.5 ASTM A182 F316L PO# HEAT#  |
| SPF25A150S40-WN  | 25NB   | 1"     | 26.64  | 110 | 79.4         | 4        | 15.88  | 12.7      | 33.4  | 49  | 50.8  | 54 | - | F316L | TMC 25NB PIPE S40 ANSI 150 ASME B16.5 ASTM A182 F316L PO# HEAT#  |
| SPF32A150S40-WN  | 32NB   | 1 1/4" | 35.05  | 115 | 88.9         | 4        | 15.88  | 14.3      | 42.2  | 59  | 63.5  | 56 | - | F316L | TMC 32NB PIPE S40 ANSI 150 ASME B16.5 ASTM A182 F316L PO# HEAT#  |
| SPF40A150S40-WN  | 40NB   | 1 1/2" | 40.89  | 125 | 98.4         | 4        | 15.88  | 15.9      | 48.3  | 65  | 73    | 60 | - | F316L | TMC 40NB PIPE S40 ANSI 150 ASME B16.5 ASTM A182 F316L PO# HEAT#  |
| SPF50A150S40-WN  | 50NB   | 2"     | 52.5   | 150 | 120.7        | 4        | 19.05  | 17.5      | 60.3  | 78  | 92.1  | 62 | - | F316L | TMC 50NB PIPE S40 ANSI 150 ASME B16.5 ASTM A182 F316L PO# HEAT#  |
| SPF65A150S40-WN  | 65NB   | 2 1/2" | 62.71  | 180 | 139.7        | 4        | 19.05  | 20.7      | 73    | 90  | 104.8 | 68 | - | F316L | TMC 65NB PIPE S40 ANSI 150 ASME B16.5 ASTM A182 F316L PO# HEAT#  |
| SPF80A150S40-WN  | 80NB   | 3"     | 77.93  | 190 | 152.4        | 4        | 19.05  | 22.3      | 88.9  | 108 | 127   | 68 | - | F316L | TMC 80NB PIPE S40 ANSI 150 ASME B16.5 ASTM A182 F316L PO# HEAT#  |
| SPF100A150S40-WN | 100NB  | 4"     | 102.26 | 230 | 190.5        | 8        | 19.05  | 22.3      | 114.3 | 135 | 157.2 | 75 | - | F316L | TMC 100NB PIPE S40 ANSI 150 ASME B16.5 ASTM A182 F316L PO# HEAT# |



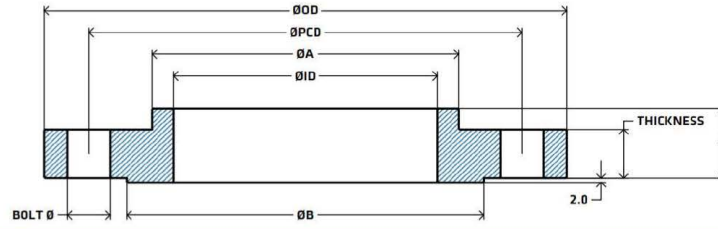
BSP THREADED FLANGE - ANSI 150 - ASME B16.5 - RFTH

| TMC CODE     | SIZE   |        | ØID         | ØOD | BOLT PATTERN |          |        | THICKNESS | A   | B     | C  | D | E | GRADE | MARKINGS  |
|--------------|--------|--------|-------------|-----|--------------|----------|--------|-----------|-----|-------|----|---|---|-------|---|
|              | METRIC | INCH   |             |     | ØPCD         | BOLT NO. | BOLT Ø |           |     |       |    |   |   |       |   |
| SBSPF25A150  | 25NB   | 1"     | 1" BSPP     | 110 | 79.4         | 4        | 15.88  | 12.7      | 49  | 50.8  | 16 | - | - | F316L | TMC 25NB BSP ANSI 150 ASME B16.5 ASTM A182 F316L PO# HEAT#  |
| SBSPF40A150  | 40NB   | 1 1/2" | 1 1/2" BSPP | 125 | 98.4         | 4        | 15.88  | 15.9      | 65  | 73    | 21 | - | - | F316L | TMC 40NB BSP ANSI 150 ASME B16.5 ASTM A182 F316L PO# HEAT#  |
| SBSPF50A150  | 50NB   | 2"     | 2" BSPP     | 150 | 120.7        | 4        | 19.05  | 17.5      | 78  | 92.1  | 24 | - | - | F316L | TMC 50NB BSP ANSI 150 ASME B16.5 ASTM A182 F316L PO# HEAT#  |
| SBSPF80A150  | 80NB   | 3"     | 3" BSPP     | 190 | 152.4        | 4        | 19.05  | 22.3      | 108 | 127   | 29 | - | - | F316L | TMC 80NB BSP ANSI 150 ASME B16.5 ASTM A182 F316L PO# HEAT#  |
| SBSPF100A150 | 100NB  | 4"     | 4" BSPP     | 230 | 190.5        | 8        | 19.05  | 22.3      | 135 | 157.2 | 32 | - | - | F316L | TMC 100NB BSP ANSI 150 ASME B16.5 ASTM A182 F316L PO# HEAT# |



BLIND FLANGE - ANSI 150 - ASME B16.5 - RFBL

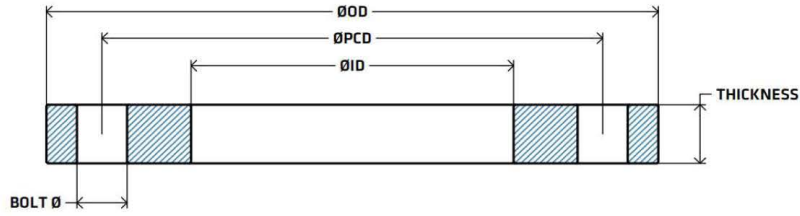
| TMC CODE   | SIZE   |        | ØID | ØOD | BOLT PATTERN |          |        | THICKNESS | A     | B | C | D | E | GRADE | MARKINGS  |
|------------|--------|--------|-----|-----|--------------|----------|--------|-----------|-------|---|---|---|---|-------|---|
|            | METRIC | INCH   |     |     | ØPCD         | BOLT NO. | BOLT Ø |           |       |   |   |   |   |       |   |
| SBF15A150  | 15NB   | 1/2"   | N/A | 90  | 60.3         | 4        | 15.88  | 9.6       | 34.9  | - | - | - | - | F316L | TMC 15NB BLIND ANSI 150 ASME B16.5 ASTM A182 F316L PO# HEAT#  |
| SBF20A150  | 20NB   | 3/4"   | N/A | 100 | 69.9         | 4        | 15.88  | 11.2      | 42.9  | - | - | - | - | F316L | TMC 20NB BLIND ANSI 150 ASME B16.5 ASTM A182 F316L PO# HEAT#  |
| SBF25A150  | 25NB   | 1"     | N/A | 110 | 79.4         | 4        | 15.88  | 12.7      | 50.8  | - | - | - | - | F316L | TMC 25NB BLIND ANSI 150 ASME B16.5 ASTM A182 F316L PO# HEAT#  |
| SBF32A150  | 32NB   | 1 1/4" | N/A | 115 | 88.9         | 4        | 15.88  | 14.3      | 63.5  | - | - | - | - | F316L | TMC 32NB BLIND ANSI 150 ASME B16.5 ASTM A182 F316L PO# HEAT#  |
| SBF40A150  | 40NB   | 1 1/2" | N/A | 125 | 98.4         | 4        | 15.88  | 15.9      | 73    | - | - | - | - | F316L | TMC 40NB BLIND ANSI 150 ASME B16.5 ASTM A182 F316L PO# HEAT#  |
| SBF50A150  | 50NB   | 2"     | N/A | 150 | 120.7        | 4        | 19.05  | 17.5      | 92.1  | - | - | - | - | F316L | TMC 50NB BLIND ANSI 150 ASME B16.5 ASTM A182 F316L PO# HEAT#  |
| SBF65A150  | 65NB   | 2 1/2" | N/A | 180 | 139.7        | 4        | 19.05  | 20.7      | 104.8 | - | - | - | - | F316L | TMC 65NB BLIND ANSI 150 ASME B16.5 ASTM A182 F316L PO# HEAT#  |
| SBF80A150  | 80NB   | 3"     | N/A | 190 | 152.4        | 4        | 19.05  | 22.3      | 127   | - | - | - | - | F316L | TMC 80NB BLIND ANSI 150 ASME B16.5 ASTM A182 F316L PO# HEAT#  |
| SBF100A150 | 100NB  | 4"     | N/A | 230 | 190.5        | 8        | 19.05  | 22.3      | 157.2 | - | - | - | - | F316L | TMC 100NB BLIND ANSI 150 ASME B16.5 ASTM A182 F316L PO# HEAT# |
| SBF125A150 | 125NB  | 5"     | N/A | 255 | 215.9        | 8        | 22.22  | 22.3      | 185.7 | - | - | - | - | F316L | TMC 125NB BLIND ANSI 150 ASME B16.5 ASTM A182 F316L PO# HEAT# |
| SBF150A150 | 150NB  | 6"     | N/A | 280 | 241.3        | 8        | 22.22  | 23.9      | 215.9 | - | - | - | - | F316L | TMC 150NB BLIND ANSI 150 ASME B16.5 ASTM A182 F316L PO# HEAT# |
| SBF200A150 | 200NB  | 8"     | N/A | 345 | 298.5        | 8        | 22.22  | 27        | 269.9 | - | - | - | - | F316L | TMC 200NB BLIND ANSI 150 ASME B16.5 ASTM A182 F316L PO# HEAT# |
| SBF250A150 | 250NB  | 10"    | N/A | 405 | 362          | 12       | 25.4   | 28.6      | 323.8 | - | - | - | - | F316L | TMC 250NB BLIND ANSI 150 ASME B16.5 ASTM A182 F316L PO# HEAT# |
| SBF300A150 | 300NB  | 12"    | N/A | 485 | 431.8        | 12       | 25.4   | 30.2      | 381   | - | - | - | - | F316L | TMC 300NB BLIND ANSI 150 ASME B16.5 ASTM A182 F316L PO# HEAT# |



REVISED: 12/09/23

PIPE FLANGE (TO SUIT SCHEDULE PIPE) - ANSI 300 - ASME B16.5 - RFSO

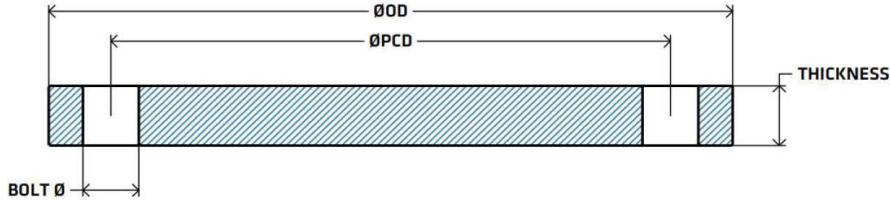
| TMC CODE   | SIZE   |        | ØID   | ØOD | BOLT PATTERN |          |        | THICKNESS | A   | B     | C  | D | E | GRADE | MARKINGS   |
|------------|--------|--------|-------|-----|--------------|----------|--------|-----------|-----|-------|----|---|---|-------|--|
|            | METRIC | INCH   |       |     | ØPCD         | BOLT NO. | BOLT Ø |           |     |       |    |   |   |       |  |
| SPF25A300  | 25NB   | 1"     | 34.5  | 125 | 88.9         | 4        | 19.05  | 15.9      | 54  | 50.8  | 25 | - | - | F316L | TMC 25NB PIPE ANSI 300 ASME B16.5 ASTM A182 F316L PO# HEAT#  |
| SPF40A300  | 40NB   | 1 1/2" | 49.5  | 155 | 114.3        | 4        | 22.22  | 19.1      | 70  | 73    | 29 | - | - | F316L | TMC 40NB PIPE ANSI 300 ASME B16.5 ASTM A182 F316L PO# HEAT#  |
| SPF50A300  | 50NB   | 2"     | 61.9  | 165 | 127          | 8        | 19.05  | 20.7      | 84  | 92.1  | 32 | - | - | F316L | TMC 50NB PIPE ANSI 300 ASME B16.5 ASTM A182 F316L PO# HEAT#  |
| SPF65A300  | 65NB   | 2 1/2" | 74.6  | 190 | 149.2        | 8        | 22.22  | 23.9      | 100 | 104.8 | 37 | - | - | F316L | TMC 65NB PIPE ANSI 300 ASME B16.5 ASTM A182 F316L PO# HEAT#  |
| SPF80A300  | 80NB   | 3"     | 90.6  | 210 | 168.3        | 8        | 22.22  | 27        | 117 | 127   | 41 | - | - | F316L | TMC 80NB PIPE ANSI 300 ASME B16.5 ASTM A182 F316L PO# HEAT#  |
| SPF100A300 | 100NB  | 4"     | 116   | 255 | 200          | 8        | 22.22  | 30.2      | 146 | 157.2 | 46 | - | - | F316L | TMC 100NB PIPE ANSI 300 ASME B16.5 ASTM A182 F316L PO# HEAT# |
| SPF150A300 | 150NB  | 6"     | 170.6 | 320 | 269.9        | 12       | 22.22  | 35        | 206 | 215.9 | 51 | - | - | F316L | TMC 150NB PIPE ANSI 300 ASME B16.5 ASTM A182 F316L PO# HEAT# |



REVISED: 12/09/23

PIPE FLANGE (TO SUIT SCHEDULE PIPE) - AS4087 PN16\* - FF50

| TMC CODE     | SIZE   |        | ØID   | ØOD | BOLT PATTERN |          |        | THICKNESS | A | B | C | D | E | GRADE | MARKINGS  |
|--------------|--------|--------|-------|-----|--------------|----------|--------|-----------|---|---|---|---|---|-------|---|
|              | METRIC | INCH   |       |     | ØPCD         | BOLT NO. | BOLT Ø |           |   |   |   |   |   |       |   |
| SPF50AS4087  | 50NB   | 2"     | 61.9  | 150 | 114          | 4        | 18     | 11        | - | - | - | - | - | F316L | TMC 50NB PIPE AS4087 PN16 NON STANDARD ASTM A182 F316L PO# HEAT#  |
| SPF65AS4087  | 65NB   | 2 1/2" | 74.6  | 165 | 127          | 4        | 18     | 11        | - | - | - | - | - | F316L | TMC 65NB PIPE AS4087 PN16 NON STANDARD ASTM A182 F316L PO# HEAT#  |
| SPF80AS4087  | 80NB   | 3"     | 90.6  | 185 | 146          | 4        | 18     | 11        | - | - | - | - | - | F316L | TMC 80NB PIPE AS4087 PN16 NON STANDARD ASTM A182 F316L PO# HEAT#  |
| SPF100AS4087 | 100NB  | 4"     | 116   | 215 | 178          | 4        | 18     | 13        | - | - | - | - | - | F316L | TMC 100NB PIPE AS4087 PN16 NON STANDARD ASTM A182 F316L PO# HEAT# |
| SPF150AS4087 | 150NB  | 6"     | 170.6 | 280 | 235          | 8        | 18     | 13        | - | - | - | - | - | F316L | TMC 150NB PIPE AS4087 PN16 NON STANDARD ASTM A182 F316L PO# HEAT# |
| SPF200AS4087 | 200NB  | 8"     | 221.4 | 335 | 292          | 8        | 18     | 19        | - | - | - | - | - | F316L | TMC 200NB PIPE AS4087 PN16 NON STANDARD ASTM A182 F316L PO# HEAT# |
| SPF250AS4087 | 250NB  | 10"    | 276.3 | 405 | 356          | 8        | 22     | 19        | - | - | - | - | - | F316L | TMC 250NB PIPE AS4087 PN16 NON STANDARD ASTM A182 F316L PO# HEAT# |
| SPF300AS4087 | 300NB  | 12"    | 327.1 | 455 | 406          | 12       | 22     | 23        | - | - | - | - | - | F316L | TMC 300NB PIPE AS4087 PN16 NON STANDARD ASTM A182 F316L PO# HEAT# |
| SPF350AS4087 | 350NB  | 14"    | 359.1 | 525 | 470          | 12       | 26     | 30        | - | - | - | - | - | F316L | TMC 350NB PIPE AS4087 PN16 NON STANDARD ASTM A182 F316L PO# HEAT# |
| SPF400AS4087 | 400NB  | 16"    | 410.4 | 580 | 521          | 12       | 26     | 30        | - | - | - | - | - | F316L | TMC 400NB PIPE AS4087 PN16 NON STANDARD ASTM A182 F316L PO# HEAT# |



BLIND FLANGE - AS4087 PN16\* - FFBL

| TMC CODE     | SIZE   |        | ØID | ØOD | BOLT PATTERN |          |        | THICKNESS | A | B | C | D | E | GRADE | MARKINGS   |
|--------------|--------|--------|-----|-----|--------------|----------|--------|-----------|---|---|---|---|---|-------|--|
|              | METRIC | INCH   |     |     | ØPCD         | BOLT NO. | BOLT Ø |           |   |   |   |   |   |       |  |
| SBF50AS4087  | 50NB   | 2"     | N/A | 150 | 114          | 4        | 18     | 11        | - | - | - | - | - | F316L | TMC 50NB BLIND AS4087 PN16 NON STANDARD ASTM A182 F316L PO# HEAT#  |
| SBF65AS4087  | 65NB   | 2 1/2" | N/A | 165 | 127          | 4        | 18     | 11        | - | - | - | - | - | F316L | TMC 65NB BLIND AS4087 PN16 NON STANDARD ASTM A182 F316L PO# HEAT#  |
| SBF80AS4087  | 80NB   | 3"     | N/A | 185 | 146          | 4        | 18     | 11        | - | - | - | - | - | F316L | TMC 80NB BLIND AS4087 PN16 NON STANDARD ASTM A182 F316L PO# HEAT#  |
| SBF100AS4087 | 100NB  | 4"     | N/A | 215 | 178          | 4        | 18     | 13        | - | - | - | - | - | F316L | TMC 100NB BLIND AS4087 PN16 NON STANDARD ASTM A182 F316L PO# HEAT# |
| SBF150AS4087 | 150NB  | 6"     | N/A | 280 | 235          | 8        | 18     | 13        | - | - | - | - | - | F316L | TMC 150NB BLIND AS4087 PN16 NON STANDARD ASTM A182 F316L PO# HEAT# |
| SBF200AS4087 | 200NB  | 8"     | N/A | 335 | 292          | 8        | 18     | 19        | - | - | - | - | - | F316L | TMC 200NB BLIND AS4087 PN16 NON STANDARD ASTM A182 F316L PO# HEAT# |
| SBF250AS4087 | 250NB  | 10"    | N/A | 405 | 356          | 8        | 22     | 19        | - | - | - | - | - | F316L | TMC 250NB BLIND AS4087 PN16 NON STANDARD ASTM A182 F316L PO# HEAT# |
| SBF300AS4087 | 300NB  | 12"    | N/A | 455 | 406          | 12       | 22     | 23        | - | - | - | - | - | F316L | TMC 300NB BLIND AS4087 PN16 NON STANDARD ASTM A182 F316L PO# HEAT# |
| SBF350AS4087 | 350NB  | 14"    | N/A | 525 | 470          | 12       | 26     | 30        | - | - | - | - | - | F316L | TMC 350NB BLIND AS4087 PN16 NON STANDARD ASTM A182 F316L PO# HEAT# |
| SBF400AS4087 | 400NB  | 16"    | N/A | 580 | 521          | 12       | 26     | 30        | - | - | - | - | - | F316L | TMC 400NB BLIND AS4087 PN16 NON STANDARD ASTM A182 F316L PO# HEAT# |

\*: Non standard variants of AS4087 PN16 flanges. These do not meet AS4087 PN16 Standard. Manufactured to ASTM A182. Yield strength greater than 250MPa